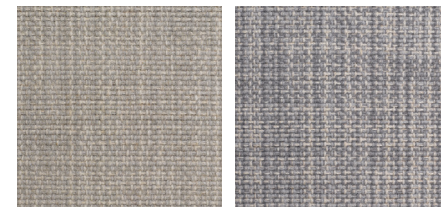


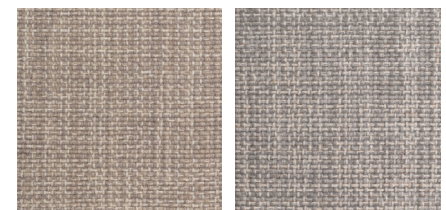
450 Blue Grotto

451 Agate



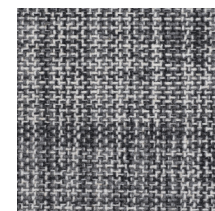
452 Natural Cotton

453 Silver Mine



454 Italian Taupe

455 Dove



456 Volcanic Ash

Product Name	CAPRI	
Construction	Flat woven	
Product description	Flat weave loop	
Suitability	Heavy domestic / Medium contract	
Gauge or pitch	20 / 10cm	
Stitch state or rows	21 / 10cm	
Tuft density	42,000 /m ²	
Pile height above backing	8mm	
Total pile weight	1,450/m ²	
Total carpet weight	3,015g/m ²	
Pile fibre content	100% Wool	
Backing materials	Cotton	
Widths available	5m	
Colour fastness:		
• Light		
• Shampoo	5	
Abrasion resistance	N/A	
Moth proofing	Woolmark CP-4 2013-level 3	
De-lamination force (Bonding Strength) ASTM D3936	2.82 lbs/inch	
Tuft withdrawal force: ISO 4919	On application	
Tog rating	1.32	
Flammability ratings: BS 4790 & BS 5287 hot metal nut test	Low radius effect of ignition	
Stock range colour references:	<div> 450 Blue Grotto 451 Agate 452 Natural Cotton 453 Silver Mine </div> <div> 454 Italian Taupe 455 Dove 456 Volcanic Ash </div>	

Hand woven flat weave loop carpet, solid dyed New Zealand wool in a contemporary tweed design. Manufactured from three ply yarn in 7 stunning colours and suitable for staircases.

All the above specifications are subject to normal manufacturing variations.

The company may make changes or improvements to products at anytime without notice.

Batch to Batch Colour Matching: Whilst every effort is made to ensure that the colours are matched as accurately as possible from one batch to another, an exact match, particularly with natural undyed wools, cannot be guaranteed. If you wish to have an exact colour, please request a dye batch cutting from your authorised dealers before ordering stock.

Heathered Carpets: Heathered carpets are created using random blends of colour, resulting in coloured flecks which are a natural feature of a heathered carpet. The blending process may also result in some linearity which is not always visible on samples and, again, is an inherent design of this type of carpet and not considered a manufacturing fault.

Hand woven Carpets: Hand woven carpets are an artisan product and, as such, can have irregularities and imperfections within the carpet. No two carpets will be identical, unlike mass produced, machine carpet. Any irregularities found within a hand woven carpet are to be celebrated and not considered a manufacturing fault.

Shading: Carpets may develop light and dark shaded areas, particularly in heavy traffic areas, this is called 'shading' and is caused by pile pressure. This is not considered to be a manufacturing defect and can occur on most textiles.

Installation Riviera Home UK carpets should always be sold and professionally installed in full accordance with BS:5325, using a good quality underlay.

Care & Maintenance: If installed and maintained correctly, your carpet should give you years of good service. We recommend that spillages are spot cleaned immediately and that you use a professional cleaning contractor to look after your carpets.

Naturally Luxurious Carpets

RivieraTM
HOME



www.rivierahomeuk.com

