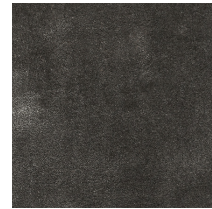


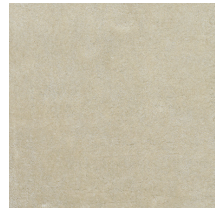
410 Silver Blush



411 Spirit Grey



412 Dark Shadow



414 Winter White



415 Softest Moss



416 Champagne Fizz



417 Velvet Earth

Product Name	LUXURE	
Construction	Hand woven	
Product description	Luxury fine Saxony	
Suitability	Luxury domestic	
Gauge or pitch	23.62 / 10 cm	
Stitch state or rows	47.24 / 10 cm	
Tuft density	111,600 /m ²	
Pile height above backing	8-9mm	
Total pile weight	3,550 g/m ²	
Total carpet weight	4,900g/m ²	
Pile fibre content	100% Bamboo	
Backing materials	Cotton	
Widths available	5m	
Colour fastness:		
• Light	5	
• Shampoo	4-5	
Abrasion resistance	In excess of 20,000 rubs	
Moth proofing	N/A	
De-lamination force	On application	
(Bonding Strength) ASTM D3936		
Tuft withdrawal force: ISO 4919	On application	
Tog rating	0.9	
Flammability ratings: BS 4790 & BS 5287 hot metal nut test	Nil ignition	
Stock range colour references:	<div> 410 Silver Blush 411 Grey Spirit 412 Dark Shadow 414 Winter White </div> <div> 415 Softest Moss 416 Champagne Fizz 417 Velvet Earth </div>	

This is the most luxurious carpet, hand woven deep plush Saxony, using a blend of pure bamboo fibres for optimal softness. Please note that bamboo fibre is hygroscopic; therefore, we advise that Luxure is not installed in areas where there may be greater risk of spillage, as contact with liquids can cause permanent changes in its appearance.

All the above specifications are subject to normal manufacturing variations.

The company may make changes or improvements to products at anytime without notice.

Batch to Batch Colour Matching: Whilst every effort is made to ensure that the colours are matched as accurately as possible from one batch to another, an exact match, particularly with natural undyed wools, cannot be guaranteed. If you wish to have an exact colour, please request a dye batch cutting from your authorised dealers before ordering stock.

Heathered Carpets: Heathered carpets are created using random blends of colour, resulting in coloured flecks which are a natural feature of a heathered carpet. The blending process may also result in some linearity which is not always visible on samples and, again, is an inherent design of this type of carpet and not considered a manufacturing fault.

Hand woven Carpets: Hand woven carpets are an artisan product and, as such, can have irregularities and imperfections within the carpet. No two carpets will be identical, unlike mass produced, machine carpet. Any irregularities found within a hand woven carpet are to be celebrated and not considered a manufacturing fault.

Shading: Carpets may develop light and dark shaded areas, particularly in heavy traffic areas, this is called 'shading' and is caused by pile pressure. This is not considered to be a manufacturing defect and can occur on most textiles.

Installation Riviera Home UK carpets should always be sold and professionally installed in full accordance with BS:5325, using a good quality underlay.

Care & Maintenance: If installed and maintained correctly, your carpet should give you years of good service. We recommend that spillages are spot cleaned immediately and that you use a professional cleaning contractor to look after your carpets.

Naturally Luxurious Carpets

RivieraTM
HOME



www.rivierahomeuk.com

