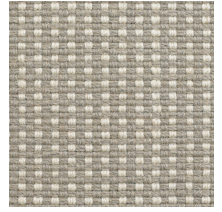
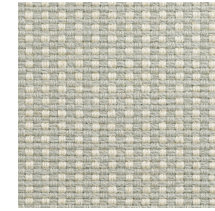


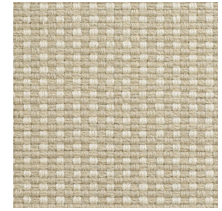
560 Salvia



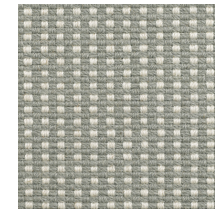
561 Mink



562 Moonbeam



563 Romeo Stone



564 Juliet Grey

Product Name	VERONA	
Construction	Hand woven flat weave	
Product description	Tufted	
Suitability	Heavy domestic/Medium contract	
Gauge or pitch	16 / 10cm	
Stitch state or rows	21 / 10cm	
Tuft density	33,600 /m ²	
Pile height above backing	8mm	
Total pile weight	1,450g/m ²	
Total carpet weight	2,800g/m ²	
Pile fibre content	100% Wool	
Backing materials	Cotton	
Widths available	5m	
Colour fastness:		
• Light		
• Shampoo	5+	
Abrasion resistance	On application	
Moth proofing	Level 3	
De-lamination force (Bonding Strength) ASTM D3936	On application	
Tuft withdrawal force: ISO 4919	On application	
Tog rating	1.32	
Flammability ratings: BS 4790 & BS 5287 hot metal nut test	Low radius effect of ignition	
Stock range colour references:	560 Salvia 561 Mink 562 Moonbeam	563 Romeo Stone 564 Juliet Grey

Verona is another 100% Wool tweed loop that is part of our Italian handwoven flat weave designs.

All the above specifications are subject to normal manufacturing variations.

The company may make changes or improvements to products at anytime without notice.

Batch to Batch Colour Matching: Whilst every effort is made to ensure that the colours are matched as accurately as possible from one batch to another, an exact match, particularly with natural undyed wools, cannot be guaranteed. If you wish to have an exact colour, please request a dye batch cutting from your authorised dealers before ordering stock.

Heathered Carpets: Heathered carpets are created using random blends of colour, resulting in coloured flecks which are a natural feature of a heathered carpet. The blending process may also result in some linearity which is not always visible on samples and, again, is an inherent design of this type of carpet and not considered a manufacturing fault.

Hand woven Carpets: Hand woven carpets are an artisan product and, as such, can have irregularities and imperfections within the carpet. No two carpets will be identical, unlike mass produced, machine carpet. Any irregularities found within a hand woven carpet are to be celebrated and not considered a manufacturing fault.

Shading: Carpets may develop light and dark shaded areas, particularly in heavy traffic areas, this is called 'shading' and is caused by pile pressure. This is not considered to be a manufacturing defect and can occur on most textiles.

Installation Riviera Home UK carpets should always be sold and professionally installed in full accordance with BS:5325, using a good quality underlay.

Care & Maintenance: If installed and maintained correctly, your carpet should give you years of good service. We recommend that spillages are spot cleaned immediately and that you use a professional cleaning contractor to look after your carpets.

Naturally Luxurious Carpets

RivieraTM
HOME



www.rivierahomeuk.com

